



COLUMBUS CITY SCHOOLS
2018 FACILITIES TASK FORCE

FINAL RECOMMENDATION

RECOMMENDATION

5

ADJUST FEEDER PATTERN

**EAST HIGH SCHOOL • LINDEN-McKINLEY STEM ACADEMY • HAMILTON STEM K-6 • LINDEN
STEM K-6 • SOUTH MIFFLIN STEM K-6 • WINDSOR STEM K-6 •
MEDINA MIDDLE SCHOOL • MIFFLIN MIDDLE SCHOOL**

THE ROLE OF THE FACILITIES TASK FORCE

COMMUNITY-LED TASK FORCE SUPPORTED BY DISTRICT STAFF WHO RECOMMENDED PROCESS FOR SCREENING BASED ON NATIONAL BEST-PRACTICE, LOCAL HISTORICAL WORK, AND SUBJECT-MATTER EXPERTISE.

REVIEW DATA AND MAKE RECOMMENDATIONS ON SCHOOLS AND ADMINISTRATIVE BUILDINGS FOR CLOSING OR CHANGING ATTENDANCE BOUNDARIES AND/OR GRADE CONFIGURATIONS.

PROVIDE RECOMMENDATIONS THAT HAVE A **STATEMENT OF RATIONALE**.

RECOMMENDATIONS WILL BE BASED ON OVERALL BALANCE AND **OBJECTIVITY OF FACTORS LISTED IN BOARD POLICY 7105**.

ISSUE DRAFT REPORT TO THE BOARD OF EDUCATION BY THE END OF AUGUST. **FINAL REPORT BY OCTOBER**.

FINAL RECOMMENDATION

RECOMMENDATION

5

ADJUST FEEDER PATTERN

**EAST HIGH SCHOOL • LINDEN-McKINLEY STEM ACADEMY • HAMILTON STEM K-6 •
LINDEN STEM K-6 • SOUTH MIFFLIN STEM K-6 • WINDSOR STEM K-6 •
MEDINA MIDDLE SCHOOL • MIFFLIN MIDDLE SCHOOL**

The Facilities Task Force recommends the conversion of Linden-McKinley STEM Academy into Linden-McKinley STEM Middle School (retaining the current Grades 7-8 at Linden-McKinley), reassignment of Linden-McKinley Grades 9-12 to East High School, adjustment of East High School's feeder pattern to include the new Linden-McKinley STEM Middle School, Hamilton STEM, Linden STEM, South Mifflin STEM, and Windsor STEM.

AND

reassignment of Grade 6 from Hamilton STEM, Linden STEM, South Mifflin STEM, and Windsor STEM to the new Linden-McKinley STEM Middle School.

AND

reassignment of middle school English-as-a-Second-Language Units (including the ESL Sheltered Site) at Medina Middle School and Mifflin Middle School to the new Linden-McKinley STEM Middle School, adjustment of the attendance boundary for Medina Middle to include the current Mifflin Middle catchment boundary (merging both schools at Medina), and closure of the Mifflin Middle School building.

FINAL RECOMMENDATION

RECOMMENDATION

5

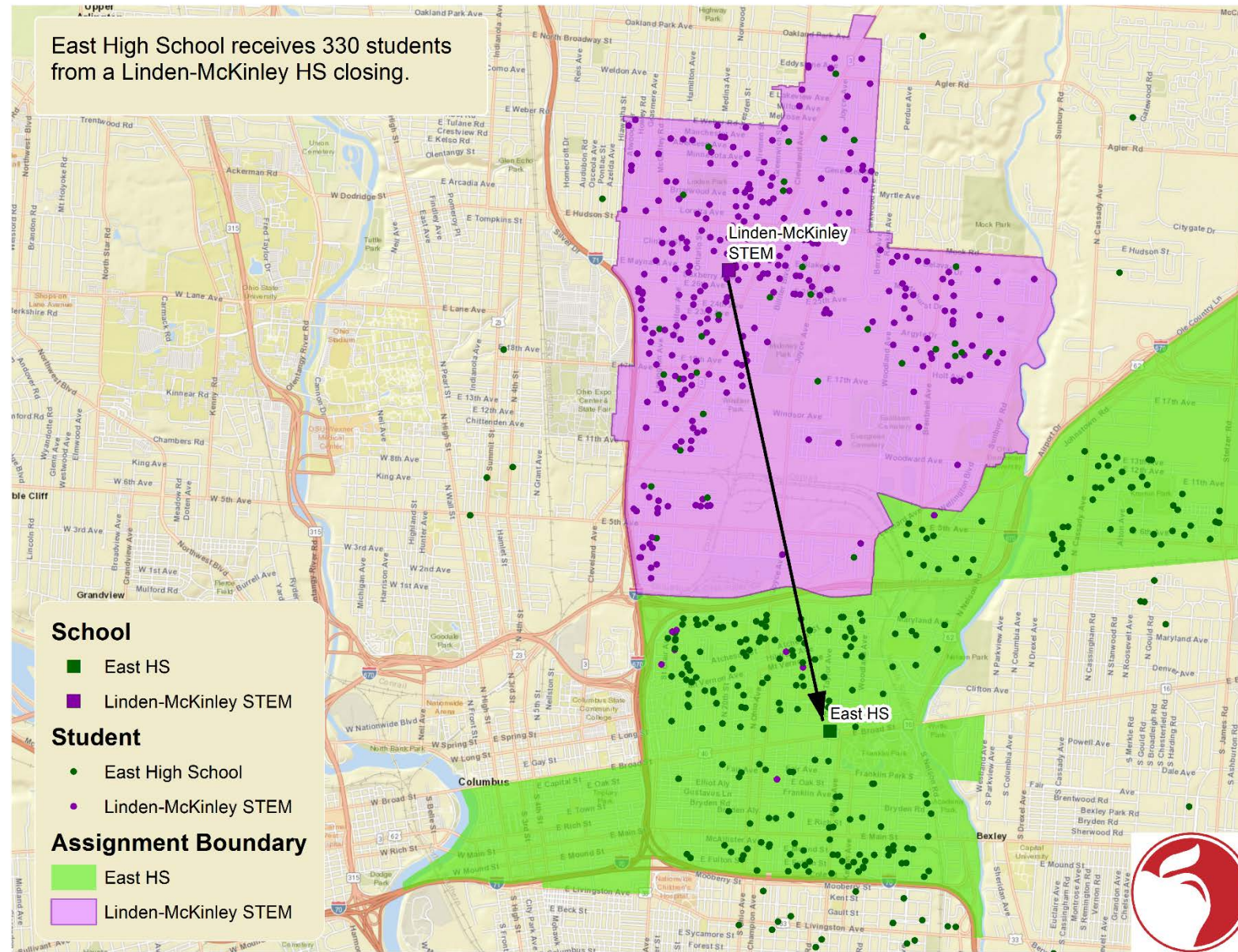
ADJUST FEEDER PATTERN

**EAST HIGH SCHOOL • LINDEN-McKINLEY STEM ACADEMY • HAMILTON STEM K-6 •
LINDEN STEM K-6 • SOUTH MIFFLIN STEM K-6 • WINDSOR STEM K-6 •
MEDINA MIDDLE SCHOOL • MIFFLIN MIDDLE SCHOOL**

RATIONALE:

- Larger grade-level enrollments allow for more robust and diverse educational opportunities and extra-curricular offerings (which are currently not available at either East or Linden-McKinley because of the smaller total enrollment).
- The merger of Grades 9-12 at East and Linden-McKinley would address building utilization concerns at both schools, which are low. Having two middle schools feeding into East High School would continue to address utilization concerns.
- In addition to restoring traditional grade banding and a true middle school experience for students in the current Linden-McKinley feeder, the move of Grade 6 out of the STEM Elementary Schools provides space to better address non-academic barriers and open new space for Pre-Kindergarten (pending funding and staffing).
- Reassignment of the ESL Sheltered Site and ESL Units from Mifflin Middle and Medina Middle benefits students who will be served in updated spaces within Linden-McKinley (new building with air conditioning). Combining Mifflin Middle and Medina Middle allows for the closure of the Mifflin Middle building, which has significant infrastructure needs.
- The Task Force recommends an additional year of planning with implementation in the 2020-2021 school year.

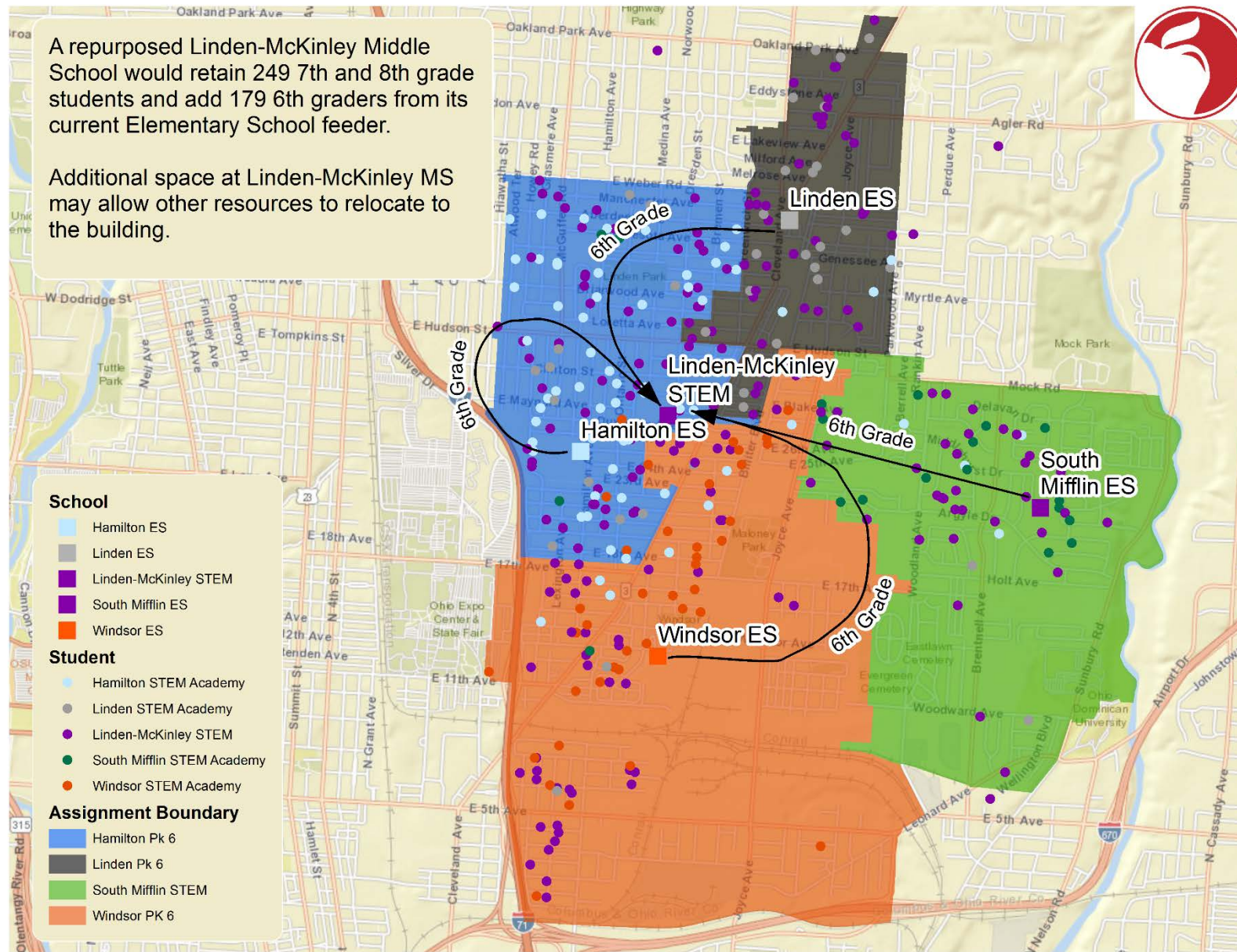
East High School receives 330 students from a Linden-McKinley HS closing.



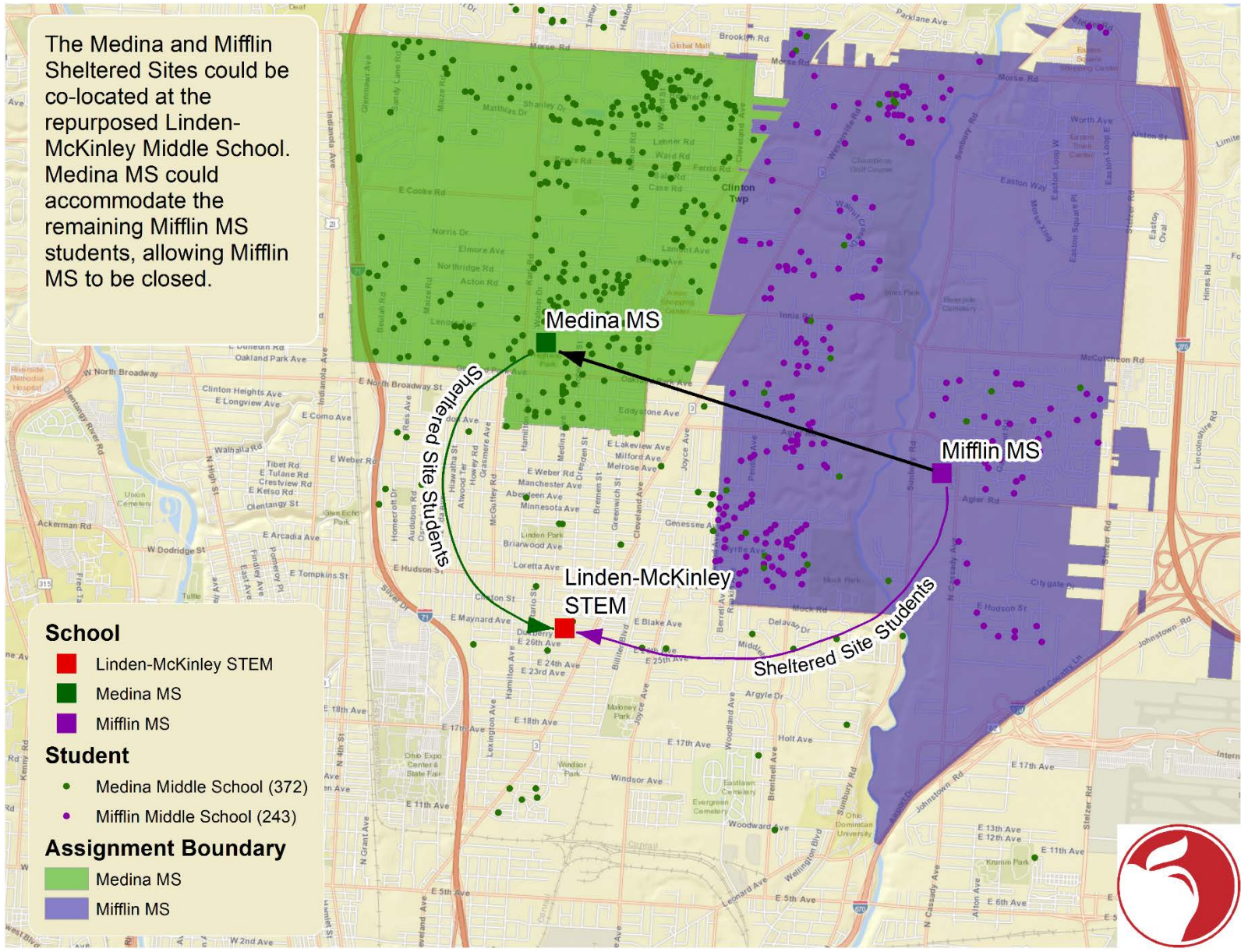


A repurposed Linden-McKinley Middle School would retain 249 7th and 8th grade students and add 179 6th graders from its current Elementary School feeder.

Additional space at Linden-McKinley MS may allow other resources to relocate to the building.



The Medina and Mifflin Sheltered Sites could be co-located at the repurposed Linden-McKinley Middle School. Medina MS could accommodate the remaining Mifflin MS students, allowing Mifflin MS to be closed.





MORE INFORMATION ABOUT THE COMMUNITY-LED FACILITIES TASK FORCE AND THE FINAL RECOMMENDATIONS ARE AVAILABLE ON THE DISTRICT WEBSITE:

www.ccsdh.us

REMINDER:

**BOARD OF EDUCATION MEETINGS ARE
NOVEMBER 7 AND NOVEMBER 20**